

EVENT
LOUNGE

be
be.brussels

FÉDÉRATION
WALLONIE-BRUXELLES

More than a venue,
it's a way of life

eventlounge.be

Share.
Connect.
Learn.



Content

ALL IN ONE CONCEPT	4
<hr/>	
EVENT FACILITIES	5-11
Plans	6-7
Ground Floor	8-9
First Floor	10-11
<hr/>	
PARTNERS	2-17
Catering partners	12-13
Technical partners	14
Hotel partners	16-17
<hr/>	
CONTACT	18

ALL IN ONE CONCEPT

Event Lounge is a venue with a trendy and glamorous style, offering you an "all in one" concept package for your events and corporate events: rooms equipped with the most modern audio and video technology, a modular set-up, high-level catering, as well as an experienced and dynamic coordination team.

The originality, modularity and flexibility of Event Lounge allows you to organize a staff party, a product launch, a conference, a seminar, a hybrid event, a lavish gala, an awards ceremony & more.

At Event Lounge, you have **at hand**
all the support you need to make
your event **unforgettable**.

The **unlimited creativity** of Event Lounge
is the reason for its forever growing **success**.



Event Lounge offers an infrastructure of 2500m² of Business & Event possibilities.

This unique venue can host events from **40 up to 1150 guests** with his main room of **1250 m²** and **11m height**.



Event Lounge is easily accessible and situated not far from the **heart of Brussels & Brussels National Airport**.

Event Lounge has a private parking of **150 cars** and parking facilities in the surroundings for **300 cars**.



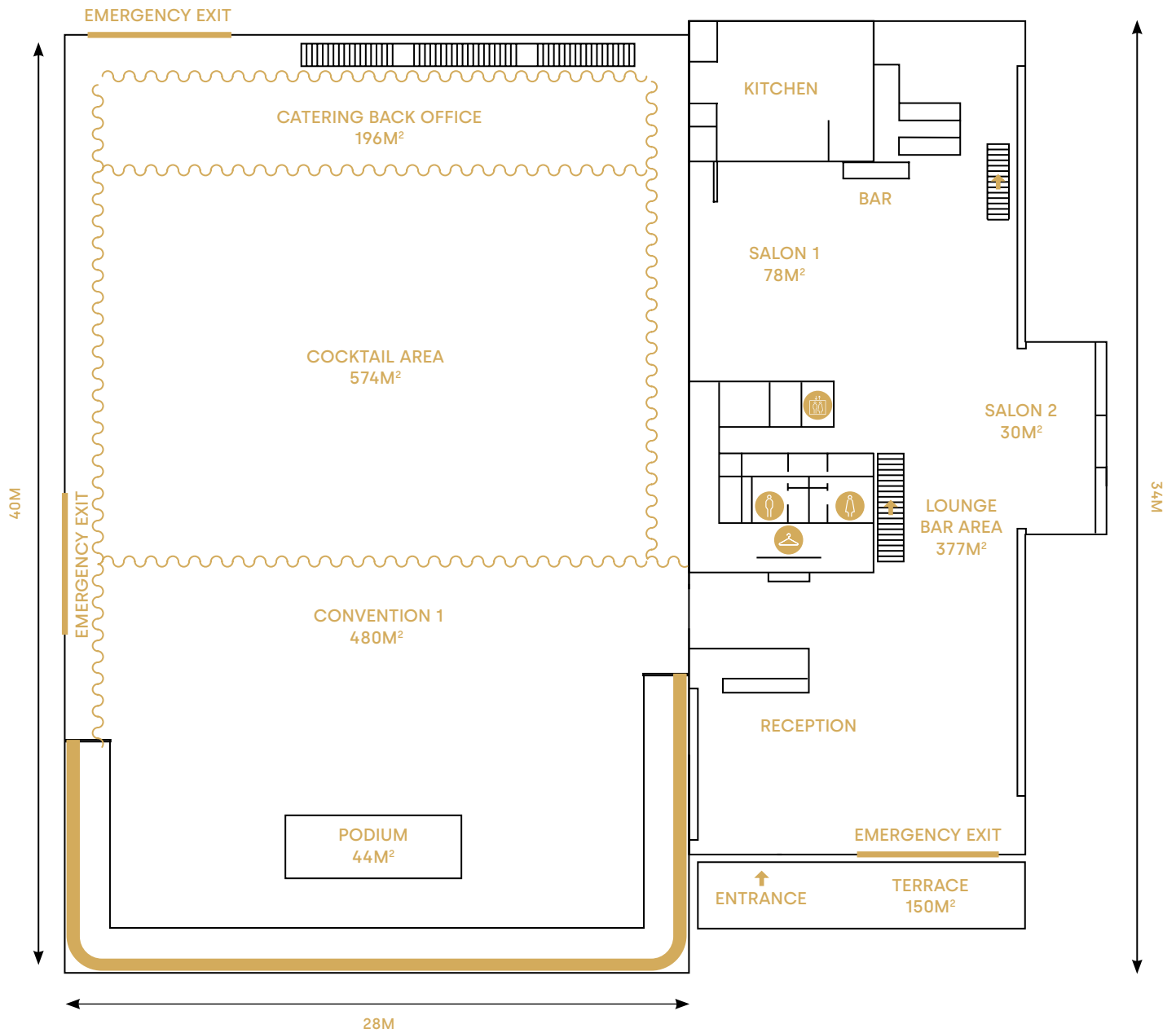
Event Lounge cares about the environment and limits its CO² emissions wherever possible.

In this respect, Event Lounge has signed the **"Green Key, ECO dynamic"** charter and has undertaken a series of steps to limit its ecological footprint.



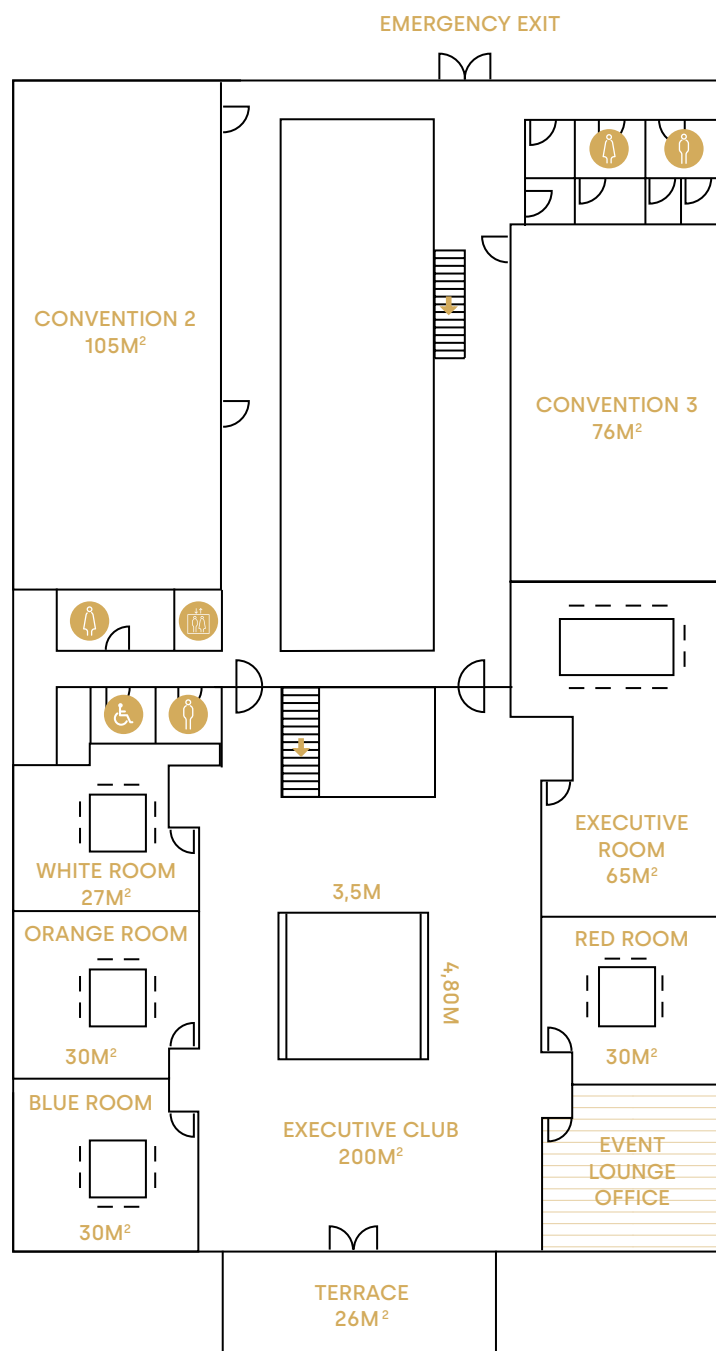
PLANS

Ground Floor



PLANS

First Floor



EVENT FACILITIES

Convention 1 & Cocktail Area



1250 m²



1000



750



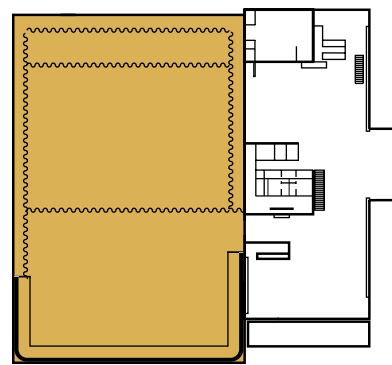
570



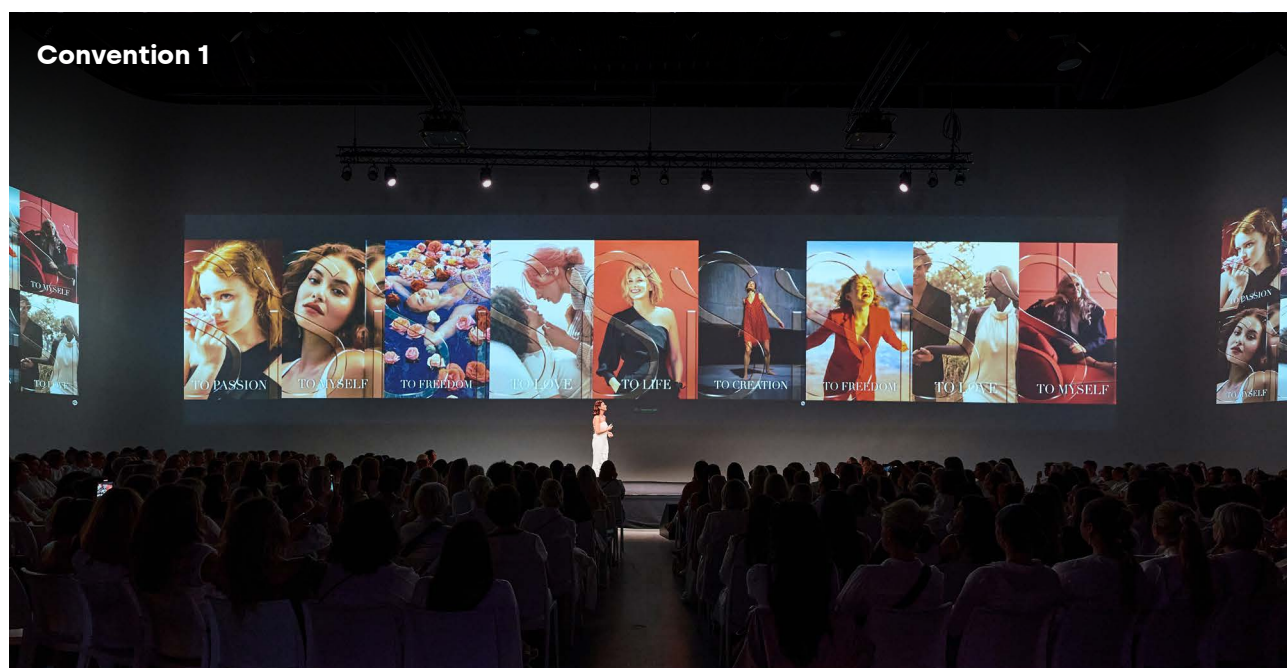
900



200



LEVEL 0



EVENT FACILITIES

Lounge Bar Area & Salon's



485 m²



450



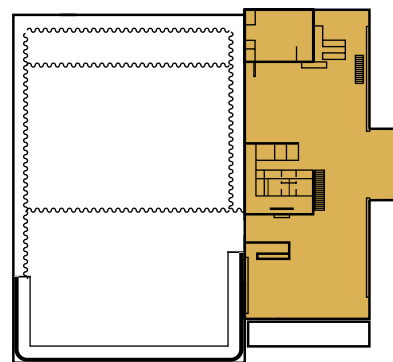
150



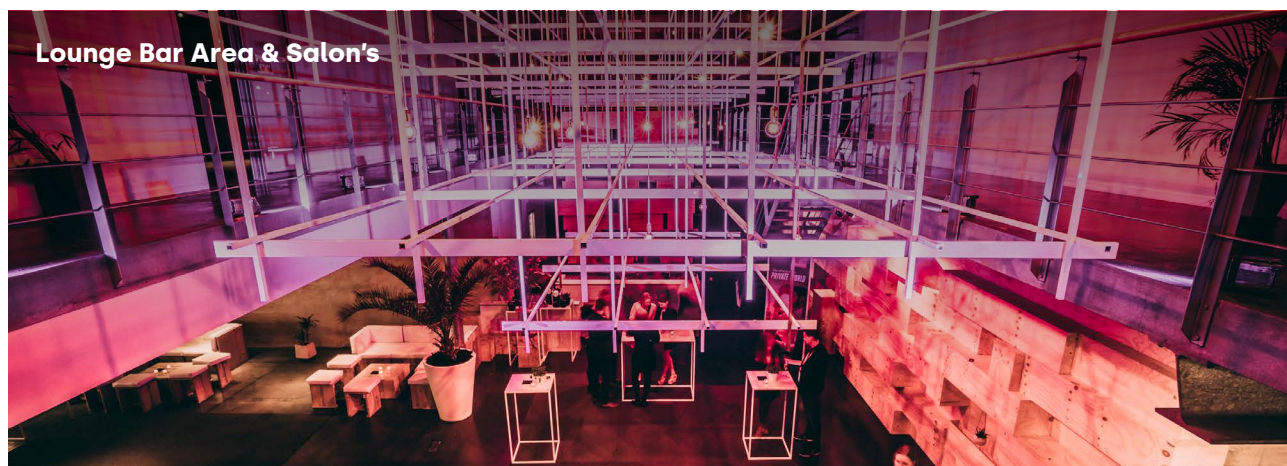
100



100



LEVEL 0



EVENT FACILITIES

Convention 2

LEVEL 1



105 m²



120



80



60



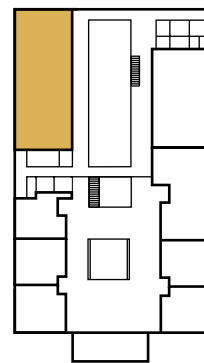
120



60



40



Convention 3

LEVEL 1



76 m²



90



06



40



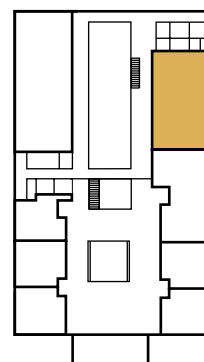
75



25



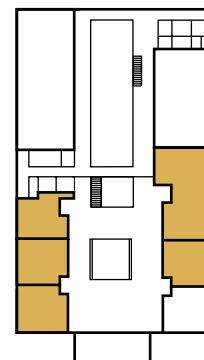
20



EVENT FACILITIES

Meeting Rooms & Executive Room

LEVEL 1



30 - 65 m²



8 - 20

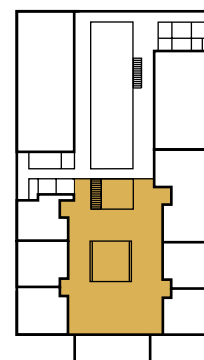


12 - 16



Executive Club

LEVEL 1



200 m²



150



80



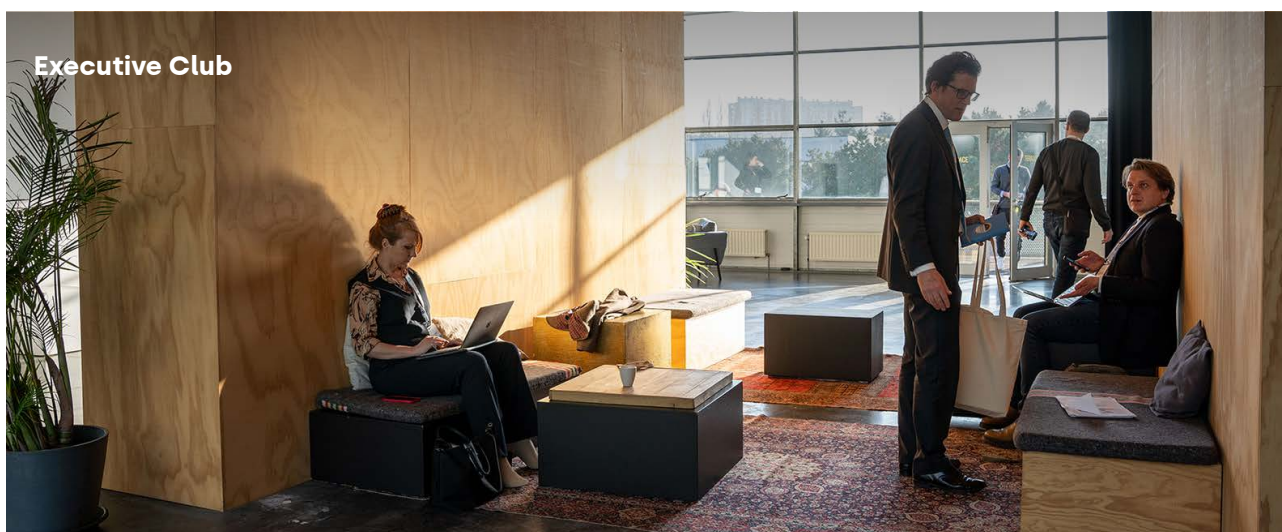
60



80



25



CATERING PARTNERS

GREAT TRAITEUR

The innovative partner
for your dining experience.

Frederic d'Oultremont
frederic@great-traiteur.be
+32 (0)2 880 87 80
+32 (0)497 10 98 64
www.great-traiteur.be



For your event, every detail is important.

Great traiteur coordinates every aspect of it:
products, equipment, service and staging.
We are a professional team that leaves nothing to
chance and adds the right touches of flavor that
make the difference. Special care is given to the
sourcing of your products.

We create menus meeting specific dietary
requirements, incorporating.



J&M

Your secret ingredient.

Aïko Vanholder
aiko.vanholder@jmcatering.be
info@jmcatering.be
Tel : 03/877 88.10
+32 (0)473 68 94 63
jmcatering.be



J&M has been active in event catering for private
citizens and companies since 1992.

Our team of motivated and passionate employees
guarantees a professional approach and strive for
absolute perfection for every assignment.
Authenticity and innovation go hand in hand at J&M.

Every budget has its prestige. With refined tastes
and delirious decoration, we offer you and your
guests an unforgettable experience.



CATERING PARTNERS

ARTFOOD

Cécile Huppertz
cecile@artfood.be
+32 (0)2 732 33 85
+32 (0)477 64 20 50
www.artfood.be



The cuisine of Artfood Traiteur is a combination of gastronomy, modernity, aesthetics and ethics.

Founded in 2009 Artfood Traiteur is a modern company that is driven by the notions of excellence, passion and creativity with a human and environmentally responsible vision.

Our company guarantees a unique approach to even the most exclusive and elegant receptions by offering refined menus.



DE FEESTARCHITECT

De Feestarchitect
info@defeestarchitect.be
+32 (0)9 355 28 93
www.defeestarchitect.be



DE FEESTARCHITECT

Tailor-made concept catering.

De Feestarchitect does not work with standard formulas, folders or pricelists.

De Feestarchitect team believes that the power of a personal approach is the key to a successful collaboration. They will accompany you in the creation of a tailor-made catering concept, based on your wishes and personality.

You only have to sit back and enjoy your party. The very important detail, like a tailor finishes his clothes.



CATERING PARTNERS

EATING POINT

From early morning 'till
the break of dawn,

Thibault Van Geet
thibault@eatingpoint.be
+32 (0)474 30 66 57
www.eatingpoint.be



Let your guests enjoy quality food, fashion food-corners and hip staff. Ease the networking by creating a natural flow and make your guests feel comfortable.

Each 'themed food corner' is suitable for 50 to 100 guests. At each counter, your guests will discover 3 different cuisines. We serve those delicious meals on both sides of the counter. We adapt our capacity to your needs. First choose your main dish.



TECHNICAL PARTNERS

GSP2

Event technology

Marc Krevnak
marc@gsp2.be
+32 (0)2 240 10 20
+32 (0)475 81 10 80
www.gsp2.be



The human size of the company, the qualitative and flexible approach, the dynamic team of professionals as well as the high level equipment, more than just keywords that will guarantee the success of your event in this special venue.

Bastien Richir and Marc Krevnak and the entire GSP2 Team, are at your disposal for your future events at Event Lounge.





HOTEL PARTNERS

PENTA HOTELS BRUSSELS CITY CENTRE ****



RECEPTION DESK

+32 2 533 66 66

info.brussels.center@pentahotels.com

pentahotels.com



GRESHAM BELSON HOTEL BRUSSELS ****

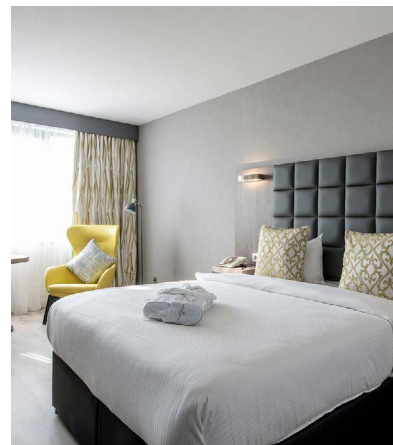


RECEPTION DESK

+32 2 708 31 00

resa@gresham-belsonhotel.com

gresham-hotels-brussels.com



HOTEL PARTNERS

MARTIN'S BRUSSELS EU ****



RECEPTION DESK

+32 2 230 85 55
mbeu@martinshotels.com
martinshotels.com

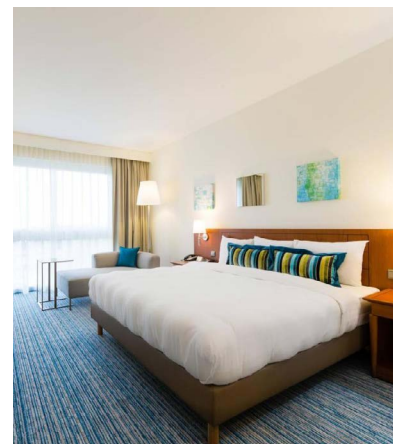
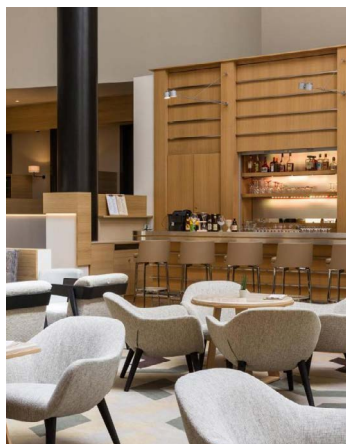


COURTYARD BY MARRIOTT BRUSSELS HOTEL ****

COURTYARD[®]
BY MARRIOTT
Brussels

RECEPTION DESK

+32 2 708 31 00
christine.cornelis@marriott.com
www.marriott.com



LET'S CONNECT TOGETHER

eventlounge.be

Général

info@eventlounge.be
T: +32 (0)2 726 55 26




Adresse

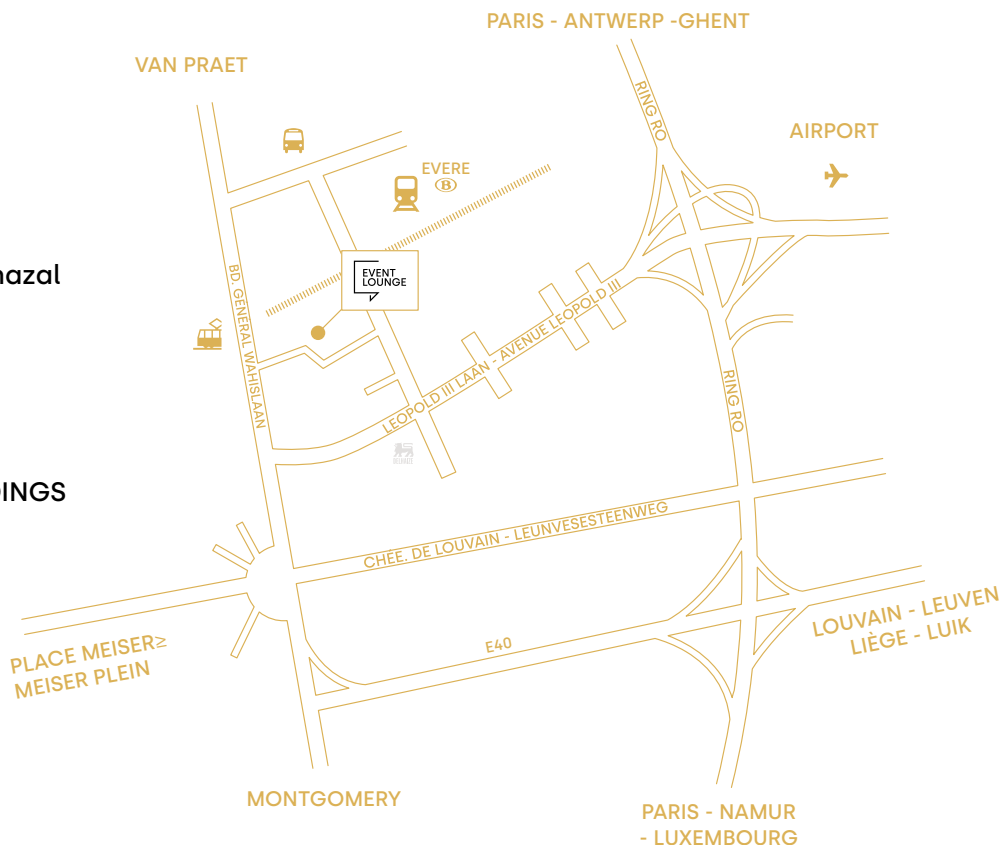
Bd. Général Wahislaan
16F, 1030 Brussels

Click to discover our other venues in town.



LES JEUX D'HIVER

-  **TRAIN**
Station Evere
-  **TRAM**
Line 7 Station Chazal
-  **BUS**
Line 64
- P** **PRIVATE**
150 cars
- P** **IN THE SURROUDINGS**
300 cars





Sharing the love,
Spreading the joy,
Join the event!

