

# Laser System Europe

## Technical Specifications - Event Lounge



Laurent Rossion  
+32 478 98 21 95

laurent@lse.eu  
lse.eu



eventlounge.be

info@eventlounge.be  
+32 (0)2 726 55 26

Bd. Général Wahislaan  
16F, 1030 Brussels



# Laser System Europe

## Introduction

### EN

From 13/02/2026 onward, Laser System Europe (LSE) will be our exclusive technical partner, bringing over 30 years of expertise in event technology. Renowned for combining lasers, drones, water and special effects, lighting, and video, LSE has redefined venues worldwide from spectacular one-night shows to permanent installations in resorts, amusement parks, event halls, and nightclubs.

Together, we are reinventing our entire technical infrastructure. The full cyclo screen will now feature a 180° projection powered by five Barco projectors, creating an immersive visual environment. This is complemented by a kinetic ceiling of 12 movable fixtures, adjustable in height and angle to reshape not only the surface but the entire volume of the room.

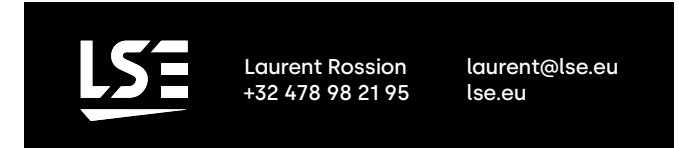
From high, open ceilings for symposiums to intimate setups for smaller gatherings or animated atmospheres for parties, the space will adapt seamlessly to every event.

### FR

À partir du 13/02/2026, Laser System Europe (LSE) sera notre partenaire technique exclusif, apportant plus de 30 ans d'expertise dans le domaine de la technologie événementielle. Réputée pour sa maîtrise de la combinaison de lasers, drones, effets spéciaux aquatiques, éclairage et vidéo, LSE a redéfini des lieux à travers le monde, des spectacles éphémères spectaculaires aux installations permanentes dans des hôtels, parcs d'attractions, salles événementielles et clubs.

Ensemble, nous réinventons toute notre infrastructure technique. L'ensemble de la superficie du cyclo offrira désormais une projection à 180°, alimentée par cinq projecteurs Barco, créant un environnement visuel immersif. Cet ensemble sera complété par un plafond kinétique composé de 12 éléments mobiles, ajustables en hauteur et en inclinaison, permettant de redéfinir non seulement la surface, mais aussi tout le volume de la salle.

Du plafond haut et dégagé pour les symposiums aux ambiances plus intimistes pour les petits rassemblements ou plus dynamiques pour les soirées, l'espace s'adaptera parfaitement à chaque événement.



### NL

Vanaf 13 februari 2026 zal Laser System Europe (LSE) onze exclusieve technische partner zijn, met meer dan 30 jaar expertise in evenemententechnologie. LSE staat bekend om hun unieke combinatie van lasers, drones, water en speciale effecten, verlichting en video, en heeft wereldwijd locaties opnieuw vormgegeven, van spectaculaire eendaagse shows tot permanente installaties in resorts, pretparken, eventhallen en clubs.

Samen heruitvinden we onze volledige technische infrastructuur. Het volledige cyclo zal voortaan beschikken over een 180° projectie, aangestuurd door vijf Barco-projectoren, die een meeslepende visuele beleving creëren. Dit wordt aangevuld met een kinetic plafond bestaande uit 12 beweegbare elementen, verstelbaar in hoogte en hoek, waarmee niet alleen het oppervlak, maar ook het volledige volume van de zaal kan worden getransformeerd.

Van een hoge, open setting voor symposiums tot een intieme opstelling voor kleinere bijeenkomsten of een dynamische sfeer voor feestelijke avonden, de ruimte zal zich naadloos aanpassen aan elk type evenement.



eventlounge.be

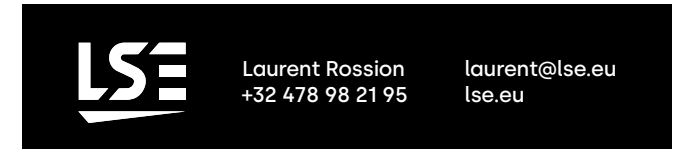
info@eventlounge.be  
+32 (0)2 726 55 26

Bd. Général Wahislaan  
16F, 1030 Brussels

# Technical List

## Convention 1 & Cocktail Area – Packs & Options

Technicians not included



### Basic Pack Convention 1

2.950€  
480m<sup>2</sup>

#### Sound

2 L-Acoustics line arrays (2x SB15M and 7x Kiva II per side)  
4 L-Acoustics Kiva II (front fill)  
4 L-Acoustics KS 21 subwoofers  
Amplifier set (2x LA7,16, 3x LA4X, 1x LS10)  
1 mixing desk Midas M32 Live fitted with Dante card  
1 wireless handheld microphone Shure  
Cable set and accessories

#### Light

18 Briteq Vertigo wash spots for ambient lighting  
2 PR-Lighting XRLED 1600-W Framing for central front light  
(1 speaker)  
1 light desk Grand Ma3 compact  
Cable set and accessories  
19 P2 lights

#### Stage

1 stage of 11m (L) x 4m (d) x 0,6m (H)  
Grey carpet and black skirt  
2 sets of stairs  
Accessories

#### Video

1 video projector Barco 4k UHD 15k (8m wide picture)  
1 media server  
Cable set and accessories

#### Rigging

13 motor Fos Kyra D8+ (250kg)  
2 Fos V6 4 way controller  
27 Prolite H30V black 3m  
6 Prolite H30V black 2m  
Rigging kit and accessories

### Basic Pack Convention 1 & Cocktail Area

3.950€  
480m<sup>2</sup> + 574m<sup>2</sup>

#### Sound

2 L-Acoustics line arrays (2x SB15M and 7x Kiva II per side)  
4 L-Acoustics Kiva II (front fill)  
4 L-Acoustics KS 21 subwoofers  
4 L-Acoustics A15 wide (reinforcement cocktail area)  
Amplifier set (2x LA7,16, 3x LA4X, 1x LS10)  
1 mixing desk Midas M32 Live fitted with Dante card  
1 wireless handheld microphone Shure  
Cable set and accessories

#### Light

36 Briteq Vertigo wash spots for ambient lighting  
2 PR-Lighting XRLED 1600-W Framing for central front light  
(1 speaker)  
1 light desk Grand Ma3 compact  
Cable set and accessories  
33 P2 lights

#### Stage

1 stage of 11m (L) x 4m (d) x 0,6m (H)  
Grey carpet and black skirt  
2 sets of stairs  
Accessories

#### Video

1 video projector Barco 4k UHD 15k (8m wide picture)  
1 media server  
Cable set and accessories

#### Rigging

17 motor Fos Kyra D8+ (250kg)  
2 Fos V6 4 way controller  
35 Prolite H30V black 3m  
6 Prolite H30V black 2m  
Rigging kit and accessories

### Options

#### Projection pack 22m

1.000€

3 video projectors Barco 4k UHD 15k (22m wide picture)  
1 media server LSE  
Cable set and accessories

#### Immersive pack 45m

2.000€

5 video projectors Barco 4k UHD 15k (45m wide picture)  
1 media server LSE  
Cable set and accessories

#### Extra light pack

1.950€

15 PR-Lighting XR 380 BWS for moving light effects  
7 PR-Lighting XRLED 1600-W Framing for full front light  
(whole stage)  
Cable set and accessories

#### Kinetic pack

- Convention 1: 3 Kinetic squares (3,5m x 3,5m) 300€  
- Convention 1 & Cocktail Area 1200€  
12 Kinetic squares (3,5m x 3,5m)  
Cable set and accessories

eventlounge.be

info@eventlounge.be  
+32 (0)2 726 55 26

Bd. Général Wahislaan  
16F, 1030 Brussels

Basic Pack  
8m x 6m



Projection  
22m



Immersive  
45m



Kinetic pack



L-Acoustics  
Basic pack



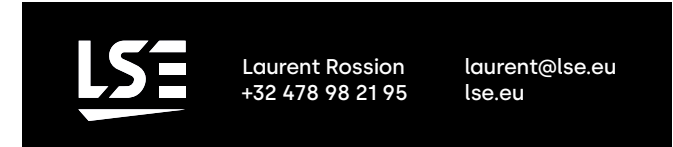
# Extra Light Pack



# Technical List

## Convention 2 & 3, Entrance, Lounge Bar, Terrace

Technicians not included



### Convention 2

Basic kit Event Lounge

#### Sound & video

Projection on the white wall  
2 Screens DELAY 32" (1 left side and 1 right side)  
1 Projector panasonic 5000 lummen (Full HD) HDMI connection  
6 Speakers  
1 Amplifier  
1 Mixing desk  
1 Wireless headset microphone  
Cable set and accessories

### Convention 3

Basic kit Event Lounge

#### Sound & video

Projection on the white wall  
1 Projector panasonic 5000 lummen (Full HD) HDMI connection  
4 Speakers  
1 Amplifier  
1 Mixing desk  
1 Wireless headset microphone  
Cable set and accessories

### Entrance, lounge bar, terrace

Basic kit Event Lounge

#### Entrance

1 Hanging screen (above the reception desk)  
cable set & accessories

#### Lounge bar area

8 par LED  
8 JBL speakers  
1 Amplifiers  
1 Mixing desk  
Cable and accessories

#### Terrace

LED Strips all along the terrace  
1 light desk  
4 Bose speakers  
1 Power Rack  
Cable and accessories



eventlounge.be

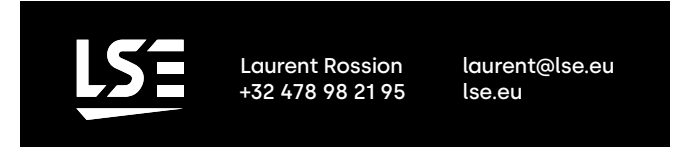
info@eventlounge.be  
+32 (0)2 726 55 26

Bd. Général Wahislaan  
16F, 1030 Brussels

# Technical List

## Executive club, Executive room, Blue room

Technicians not included



### Executive club

Basic kit Event Lounge

Ecran Samsung 98" QM98C  
Barre Caméra - Poly Studio  
Kit micro Headset double  
2 HP C25 Blanc  
Console son A&H CQ12T  
Ampli Xti 1000

### Executive room

Basic kit Event Lounge

Ecran Samsung 85" QM85C UHD  
Barre caméra - poly studio

### Blue room

Basic kit Event Lounge

Ecran Samsung 75" QM75C UHD  
Barre caméra - poly studio

### Kit Streaming & Hybridation

Following Offer LSE

Convention 1,2 & 3

3 Caméra EVERET EVP212N  
3 Coman Professional Video Tripod  
1 EVERET EVKB200N PTZ Controller  
1 Kit 2 micros cravate HF  
2 Spot Panel LED Prolights ELC TWC  
2 Pieds lumière Manfrotto 111U

PC avec Vmix 4K  
1 Accessoires PC Vmix (Souris-Clavier)  
1 Switcher POE RJ45 - Netgear- GS108P  
2 Moniteurs AOC 24"  
1 HDD Disque Samsung 1T  
1 Switcher POE RJ45 - Netgear- GS108P  
1 Kit câblage



eventlounge.be

info@eventlounge.be  
+32 (0)2 726 55 26

Bd. Général Wahislaan  
16F, 1030 Brussels

# Technical Plan

## Convention 1 & Cocktail Area - Naming

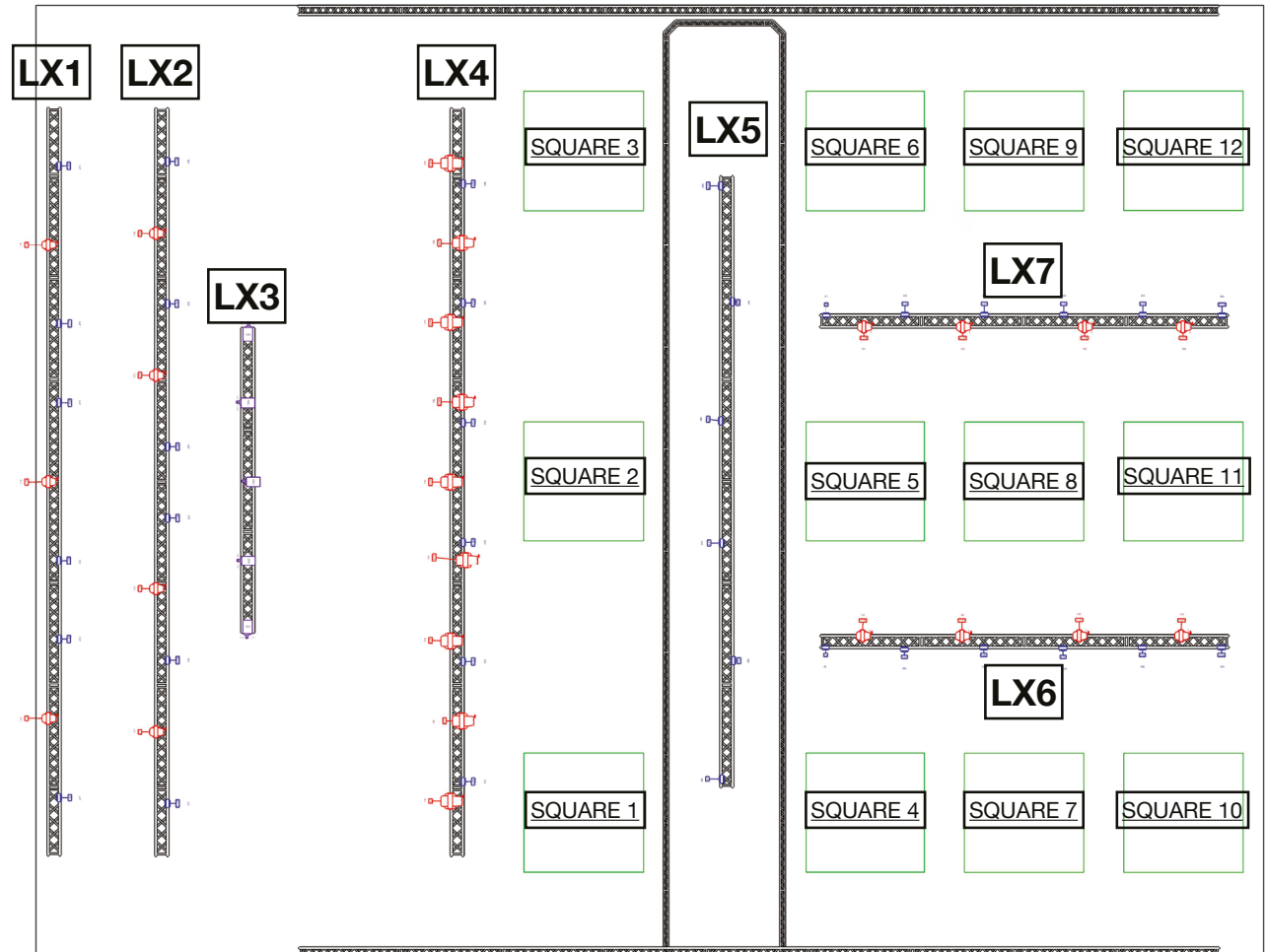


Laurent Rossion  
+32 478 98 21 95

laurent@lse.eu  
lse.eu

### Schedule

Types	Qty	Modes
BT-Vertigo	36	Standard
XR 380B BWS	15	Standard
XRLED 1600-W Framing	9	Standard
BARCO-4K-15LUMENS	5	



eventlounge.be

info@eventlounge.be  
+32 (0)2 726 55 26

Bd. Général Wahislaan  
16F, 1030 Brussels

# Technical Plan





## Convention 1 & Cocktail Area - ISO View

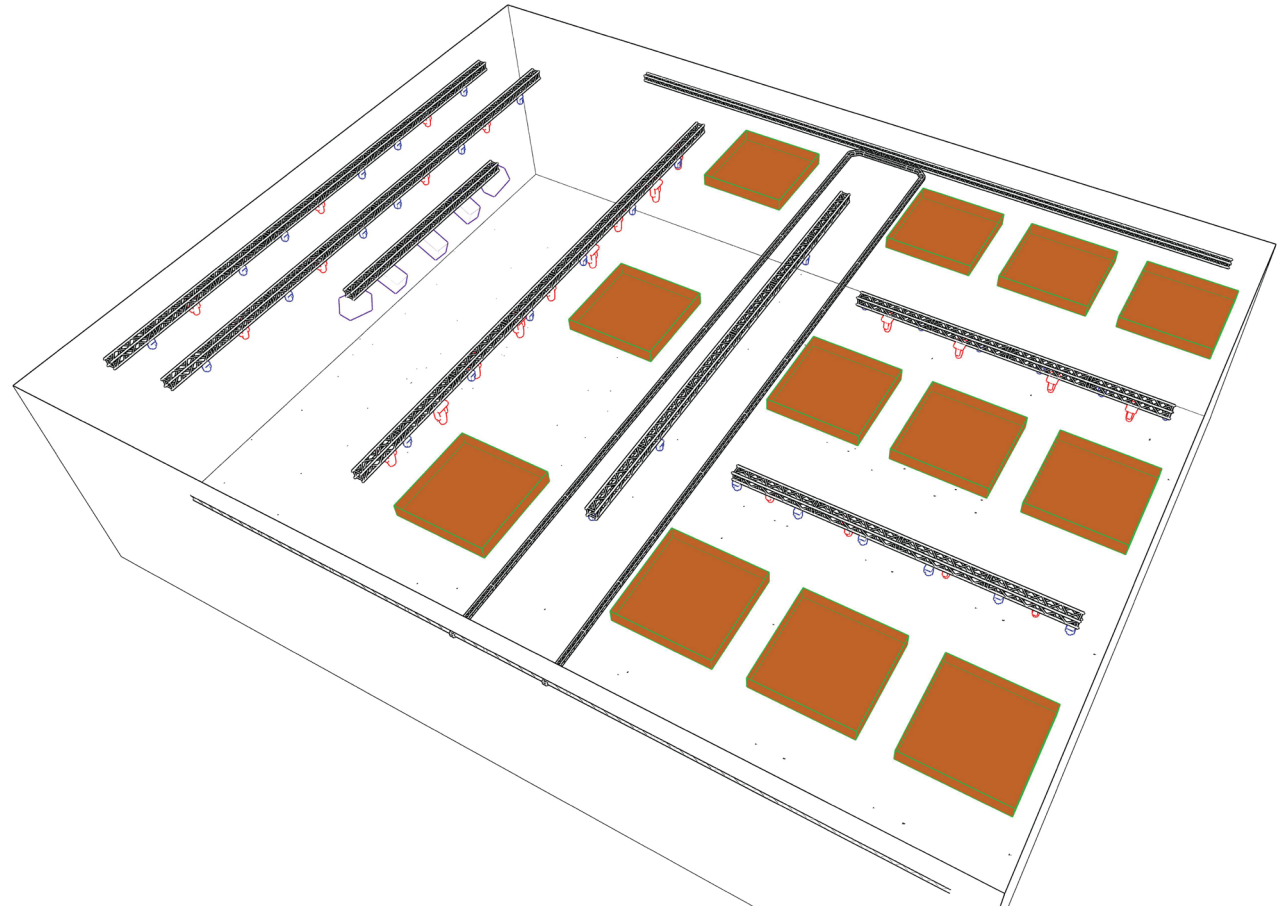


Laurent Rossion  
+32 478 98 21 95

laurent@lse.eu  
lse.eu

### Schedule

Types	Qty	Modes
 BT-Vertigo	36	Standard
 XR 380B BWS	15	Standard
 XRLED 1600-W Framing	9	Standard
 BARCO-4K-15LUMENS	5	



eventlounge.be

info@eventlounge.be  
+32 (0)2 726 55 26

Bd. Général Wahislaan  
16F, 1030 Brussels

# Technical Plan





## Convention 1 & Cocktail Area - Side View

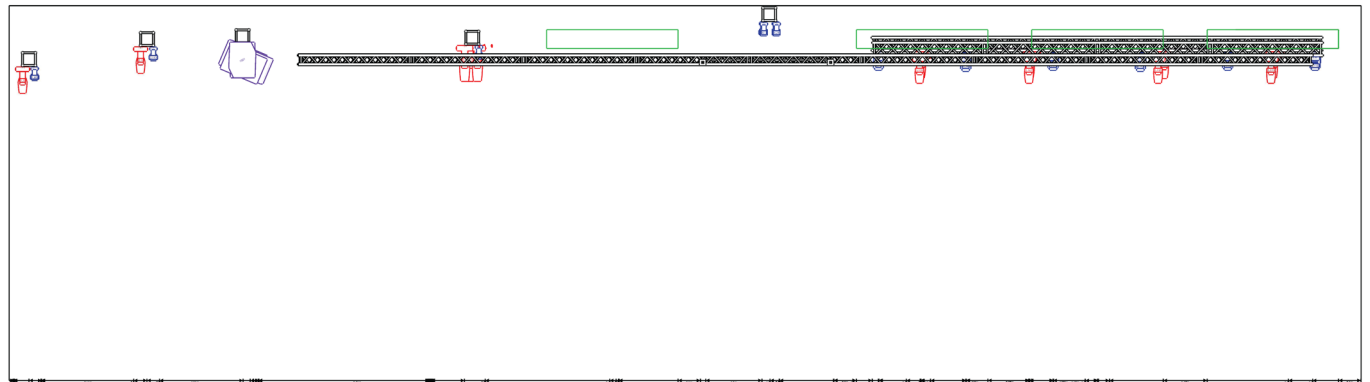


Laurent Rossion  
+32 478 98 21 95

laurent@lse.eu  
lse.eu

### Schedule

Types	Qty	Modes
 BT-Vertigo	36	Standard
 XR 380B BWS	15	Standard
 XRLED 1600-W Framing	9	Standard
 BARCO-4K-15LUMENS	5	



eventlounge.be

info@eventlounge.be  
+32 (0)2 726 55 26

Bd. Général Wahislaan  
16F, 1030 Brussels





# Technical Plan





## Convention 1 & Cocktail Area - Top Patch Drap

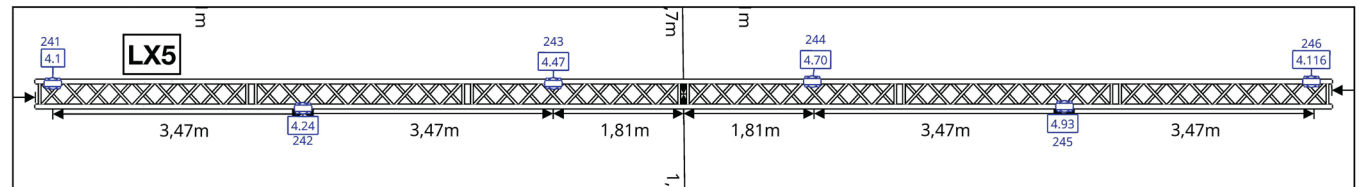


Laurent Rossion  
+32 478 98 21 95

laurent@lse.eu  
lse.eu

### Schedule

Types	Qty	Modes
 BT-Vertigo	36	Standard
 XR 380B BWS	15	Standard
 XRLED 1600-W Framing	9	Standard
 BARCO-4K-15LUMENS	5	



eventlounge.be

info@eventlounge.be  
+32 (0)2 726 55 26

Bd. Général Wahislaan  
16F, 1030 Brussels

# Technical Plan

## Convention 1 & Cocktail Area - Top Patch Venue

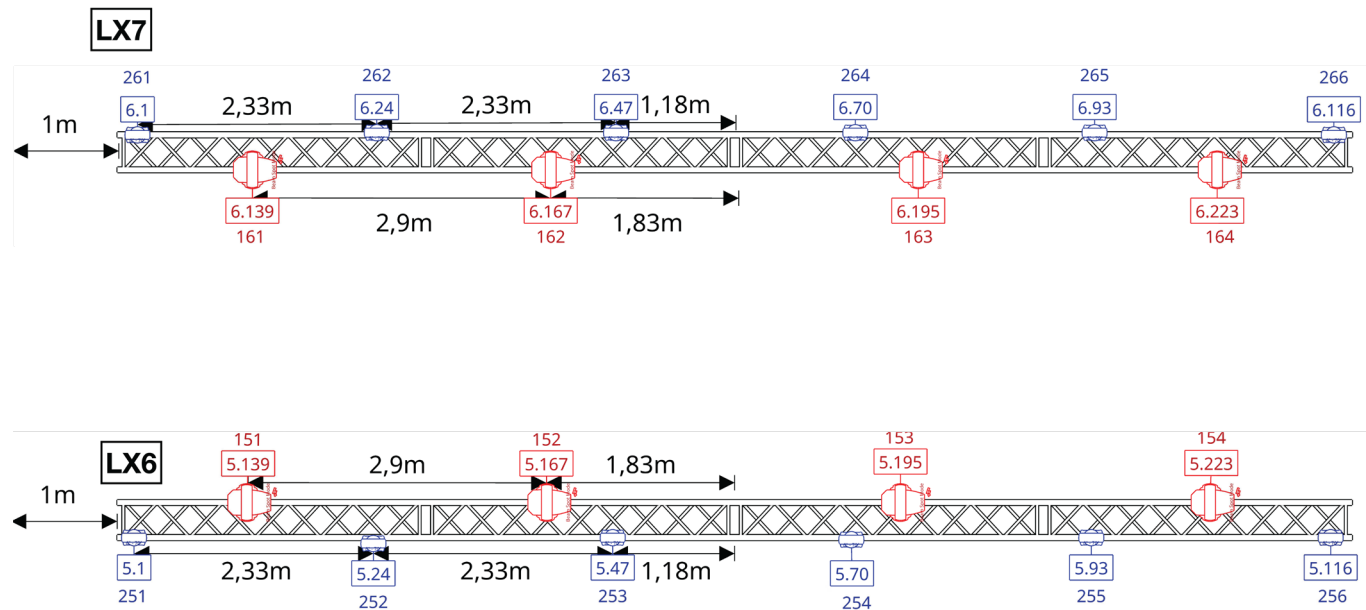


Laurent Rossion  
+32 478 98 21 95

laurent@lse.eu  
lse.eu

### Schedule

Types	Qty	Modes
BT-Vertigo	36	Standard
XR 380B BWS	15	Standard
XRLED 1600-W Framing	9	Standard
BARCO-4K-15LUMENS	5	



eventlounge.be

info@eventlounge.be  
+32 (0)2 726 55 26

Bd. Général Wahislaan  
16F, 1030 Brussels