

Laser System Europe

Technical Specifications - Event Lounge



Laurent Rossion
+32 478 98 21 95

laurent@lse.eu
lse.eu



eventlounge.be

info@eventlounge.be
+32 (0)2 726 55 26

Bd. Général Wahislaan
16F, 1030 Brussels



Laser System Europe

Introduction

EN

From 13/02/2026 onward, Laser System Europe (LSE) will be our exclusive technical partner, bringing over 30 years of expertise in event technology. Renowned for combining lasers, drones, water and special effects, lighting, and video, LSE has redefined venues worldwide from spectacular one-night shows to permanent installations in resorts, amusement parks, event halls, and nightclubs.

Together, we are reinventing our entire technical infrastructure. The full cyclo screen will now feature a 180° projection powered by five Barco projectors, creating an immersive visual environment. This is complemented by a kinetic ceiling of 12 movable fixtures, adjustable in height and angle to reshape not only the surface but the entire volume of the room.

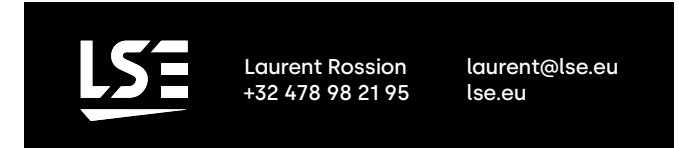
From high, open ceilings for symposiums to intimate setups for smaller gatherings or animated atmospheres for parties, the space will adapt seamlessly to every event.

FR

À partir du 13/02/2026, Laser System Europe (LSE) sera notre partenaire technique exclusif, apportant plus de 30 ans d'expertise dans le domaine de la technologie événementielle. Réputée pour sa maîtrise de la combinaison de lasers, drones, effets spéciaux aquatiques, éclairage et vidéo, LSE a redéfini des lieux à travers le monde, des spectacles éphémères spectaculaires aux installations permanentes dans des hôtels, parcs d'attractions, salles événementielles et clubs.

Ensemble, nous réinventons toute notre infrastructure technique. L'ensemble de la superficie du cyclo offrira désormais une projection à 180°, alimentée par cinq projecteurs Barco, créant un environnement visuel immersif. Cet ensemble sera complété par un plafond kinétique composé de 12 éléments mobiles, ajustables en hauteur et en inclinaison, permettant de redéfinir non seulement la surface, mais aussi tout le volume de la salle.

Du plafond haut et dégagé pour les symposiums aux ambiances plus intimistes pour les petits rassemblements ou plus dynamiques pour les soirées, l'espace s'adaptera parfaitement à chaque événement.



NL

Vanaf 13 februari 2026 zal Laser System Europe (LSE) onze exclusieve technische partner zijn, met meer dan 30 jaar expertise in evenemententechnologie. LSE staat bekend om hun unieke combinatie van lasers, drones, water en speciale effecten, verlichting en video, en heeft wereldwijd locaties opnieuw vormgegeven, van spectaculaire eendaagse shows tot permanente installaties in resorts, pretparken, eventhallen en clubs.

Samen heruitvinden we onze volledige technische infrastructuur. Het volledige cyclo zal voortaan beschikken over een 180° projectie, aangestuurd door vijf Barco-projectoren, die een meeslepende visuele beleving creëren. Dit wordt aangevuld met een kinetic plafond bestaande uit 12 beweegbare elementen, verstelbaar in hoogte en hoek, waarmee niet alleen het oppervlak, maar ook het volledige volume van de zaal kan worden getransformeerd.

Van een hoge, open setting voor symposiums tot een intieme opstelling voor kleinere bijeenkomsten of een dynamische sfeer voor feestelijke avonden, de ruimte zal zich naadloos aanpassen aan elk type evenement.



eventlounge.be

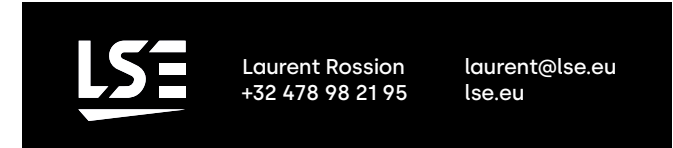
info@eventlounge.be
+32 (0)2 726 55 26

Bd. Général Wahislaan
16F, 1030 Brussels

Technical List

Convention 1 & Cocktail Area – Packs & Options

Technicians not included



Basic Pack Convention 1

2.950€
480m²

Sound

2 L-Acoustics line arrays (2x SB15M and 7x Kiva II per side)
4 L-Acoustics Kiva II (front fill)
4 L-Acoustics KS 21 subwoofers
Amplifier set (2x LA7,16, 3x LA4X, 1x LS10)
1 mixing desk Midas M32 Live fitted with Dante card
1 wireless handheld microphone Shure
Cable set and accessories

Light

18 Briteq Vertigo wash spots for ambient lighting
2 PR-Lighting XRLED 1600-W Framing for central front light
(1 speaker)
1 light desk Grand Ma3 compact
Cable set and accessories
19 P2 lights

Stage

1 stage of 11m (L) x 4m (d) x 0,6m (H)
Grey carpet and black skirt
2 sets of stairs
Accessories

Video

1 video projector Barco 4k UHD 15k (8m wide picture)
1 media server
Cable set and accessories

Rigging

13 motor Fos Kyra D8+ (250kg)
2 Fos V6 4 way controller
27 Prolite H30V black 3m
6 Prolite H30V black 2m
Rigging kit and accessories

Basic Pack Convention 1 & Cocktail Area

3.950€
480m² + 574m²

Sound

2 L-Acoustics line arrays (2x SB15M and 7x Kiva II per side)
4 L-Acoustics Kiva II (front fill)
4 L-Acoustics KS 21 subwoofers
4 L-Acoustics A15 wide (reinforcement cocktail area)
Amplifier set (2x LA7,16, 3x LA4X, 1x LS10)
1 mixing desk Midas M32 Live fitted with Dante card
1 wireless handheld microphone Shure
Cable set and accessories

Light

36 Briteq Vertigo wash spots for ambient lighting
2 PR-Lighting XRLED 1600-W Framing for central front light
(1 speaker)
1 light desk Grand Ma3 compact
Cable set and accessories
33 P2 lights

Stage

1 stage of 11m (L) x 4m (d) x 0,6m (H)
Grey carpet and black skirt
2 sets of stairs
Accessories

Video

1 video projector Barco 4k UHD 15k (8m wide picture)
1 media server
Cable set and accessories

Rigging

17 motor Fos Kyra D8+ (250kg)
2 Fos V6 4 way controller
35 Prolite H30V black 3m
6 Prolite H30V black 2m
Rigging kit and accessories

Options

Projection pack 22m

1.000€

3 video projectors Barco 4k UHD 15k (22m wide picture)
1 media server LSE
Cable set and accessories

Immersive pack 45m

2.000€

5 video projectors Barco 4k UHD 15k (45m wide picture)
1 media server LSE
Cable set and accessories

Extra light pack

1.950€

15 PR-Lighting XR 380 BWS for moving light effects
7 PR-Lighting XRLED 1600-W Framing for full front light
(whole stage)
Cable set and accessories

Kinetic pack

- Convention 1: 3 Kinetic squares (3,5m x 3,5m) 300€
- Convention 1 & Cocktail Area 1200€
12 Kinetic squares (3,5m x 3,5m)
Cable set and accessories

eventlounge.be

info@eventlounge.be
+32 (0)2 726 55 26

Bd. Général Wahislaan
16F, 1030 Brussels

Basic Pack
8m x 6m



Projection
22m



Immersive
45m



Kinetic pack



L-Acoustics
Basic pack



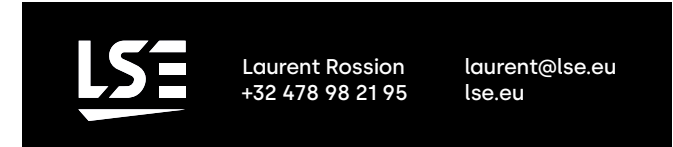
Extra Light Pack



Technical List

Convention 2 & 3, Entrance, Lounge Bar, Terrace

Technicians not included



Convention 2

Basic kit Event Lounge

Sound & video

Projection on the white wall
2 Screens DELAY 32" (1 left side and 1 right side)
1 Projector panasonic 5000 lummen (Full HD) HDMI connection
6 Speakers
1 Amplifier
1 Mixing desk
1 Wireless headset microphone
Cable set and accessories

Convention 3

Basic kit Event Lounge

Sound & video

Projection on the white wall
1 Projector panasonic 5000 lummen (Full HD) HDMI connection
4 Speakers
1 Amplifier
1 Mixing desk
1 Wireless headset microphone
Cable set and accessories

Entrance, lounge bar, terrace

Basic kit Event Lounge

Entrance

1 Hanging screen (above the reception desk)
cable set & accessories

Lounge bar area

8 par LED
8 JBL speakers
1 Amplifiers
1 Mixing desk
Cable and accessories

Terrace

LED Strips all along the terrace
1 light desk
4 Bose speakers
1 Power Rack
Cable and accessories



eventlounge.be

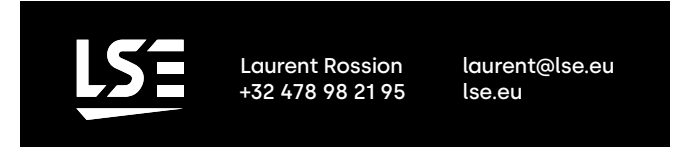
info@eventlounge.be
+32 (0)2 726 55 26

Bd. Général Wahislaan
16F, 1030 Brussels

Technical List

Executive club, Executive room, Blue room

Technicians not included



Executive club

Basic kit Event Lounge

Ecran Samsung 98" QM98C
Barre Caméra - Poly Studio
Kit micro Headset double
2 HP C25 Blanc
Console son A&H CQ12T
Ampli Xti 1000

Executive room

Basic kit Event Lounge

Ecran Samsung 85" QM85C UHD
Barre caméra - poly studio

Blue room

Basic kit Event Lounge

Ecran Samsung 75" QM75C UHD
Barre caméra - poly studio

Kit Streaming & Hybridation

Following Offer LSE

Convention 1,2 & 3

3 Caméra EVERET EVP212N
3 Coman Professional Video Tripod
1 EVERET EVKB200N PTZ Controller
1 Kit 2 micros cravate HF
2 Spot Panel LED Prolights ELC TWC
2 Pieds lumière Manfrotto 111U

PC avec Vmix 4K
1 Accessoires PC Vmix (Souris-Clavier)
1 Switcher POE RJ45 - Netgear- GS108P
2 Moniteurs AOC 24"
1 HDD Disque Samsung 1T
1 Switcher POE RJ45 - Netgear- GS108P
1 Kit câblage



eventlounge.be

info@eventlounge.be
+32 (0)2 726 55 26

Bd. Général Wahislaan
16F, 1030 Brussels

Technical Plan

Convention 1 & Cocktail Area - Naming

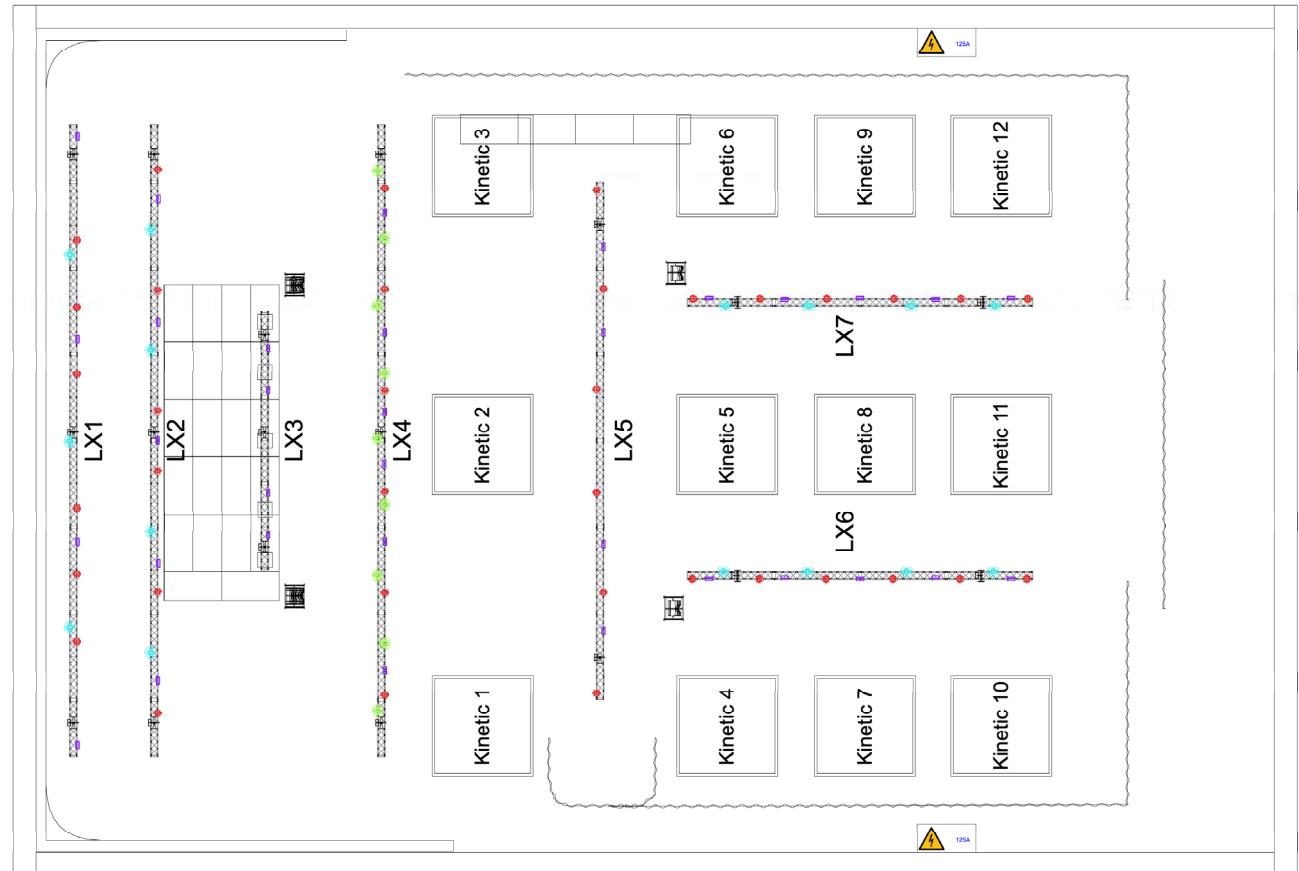


Laurent Rossion
+32 478 98 21 95

laurent@lse.eu
lse.eu

Schedule

Types	Plan	Qty
BT-Vertigo	●	36
PR Lighting XR 1800-W Framing	●	9
PR Lighting XR 380 BWS	●	15
SGM P-2 15deg	●	33



eventlounge.be

info@eventlounge.be
+32 (0)2 726 55 26

Bd. Général Wahislaan
16F, 1030 Brussels

Technical Plan

Convention 1 & Cocktail Area - ISO View



Laurent Rossion
+32 478 98 21 95

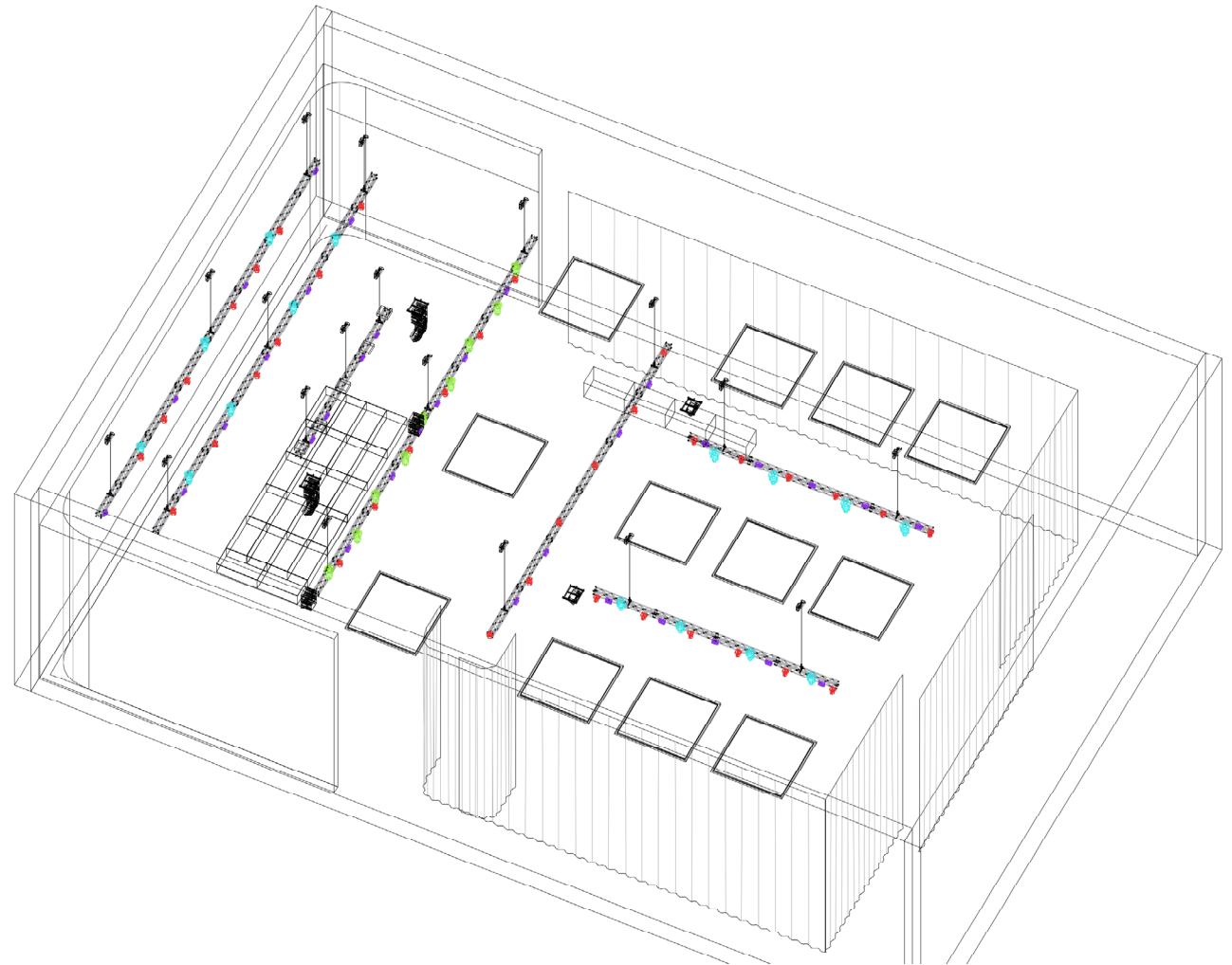
laurent@lse.eu
lse.eu

Schedule

Types

Plan

-  BT-Vertigo ●
-  PR Lighting XR 1800-W Framing ●
-  PR Lighting XR 380 BWS ●
-  SGM P-2 15deg ●



eventlounge.be

info@eventlounge.be
+32 (0)2 726 55 26

Bd. Général Wahislaan
16F, 1030 Brussels

Technical Plan

Convention 1 & Cocktail Area - Top Patch Stage







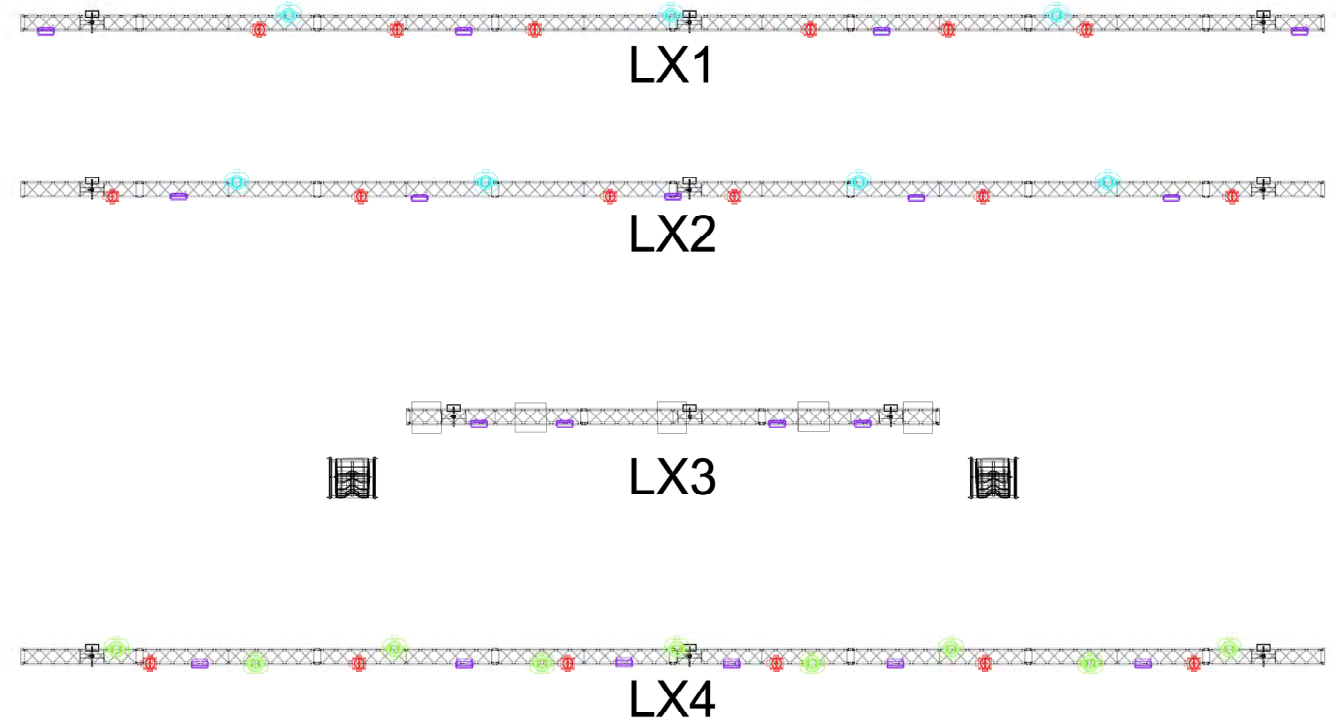
Laurent Rossion
+32 478 98 21 95

laurent@lse.eu
lse.eu

Schedule

Types Plan

 BT-Vertigo	●
 PR Lighting XR 1800-W Framing	●
 PR Lighting XR 380 BWS	●
 SGM P-2 15deg	●



eventlounge.be

info@eventlounge.be
+32 (0)2 726 55 26

Bd. Général Wahislaan
16F, 1030 Brussels

Technical Plan

Convention 1 & Cocktail Area - Top Patch Drop







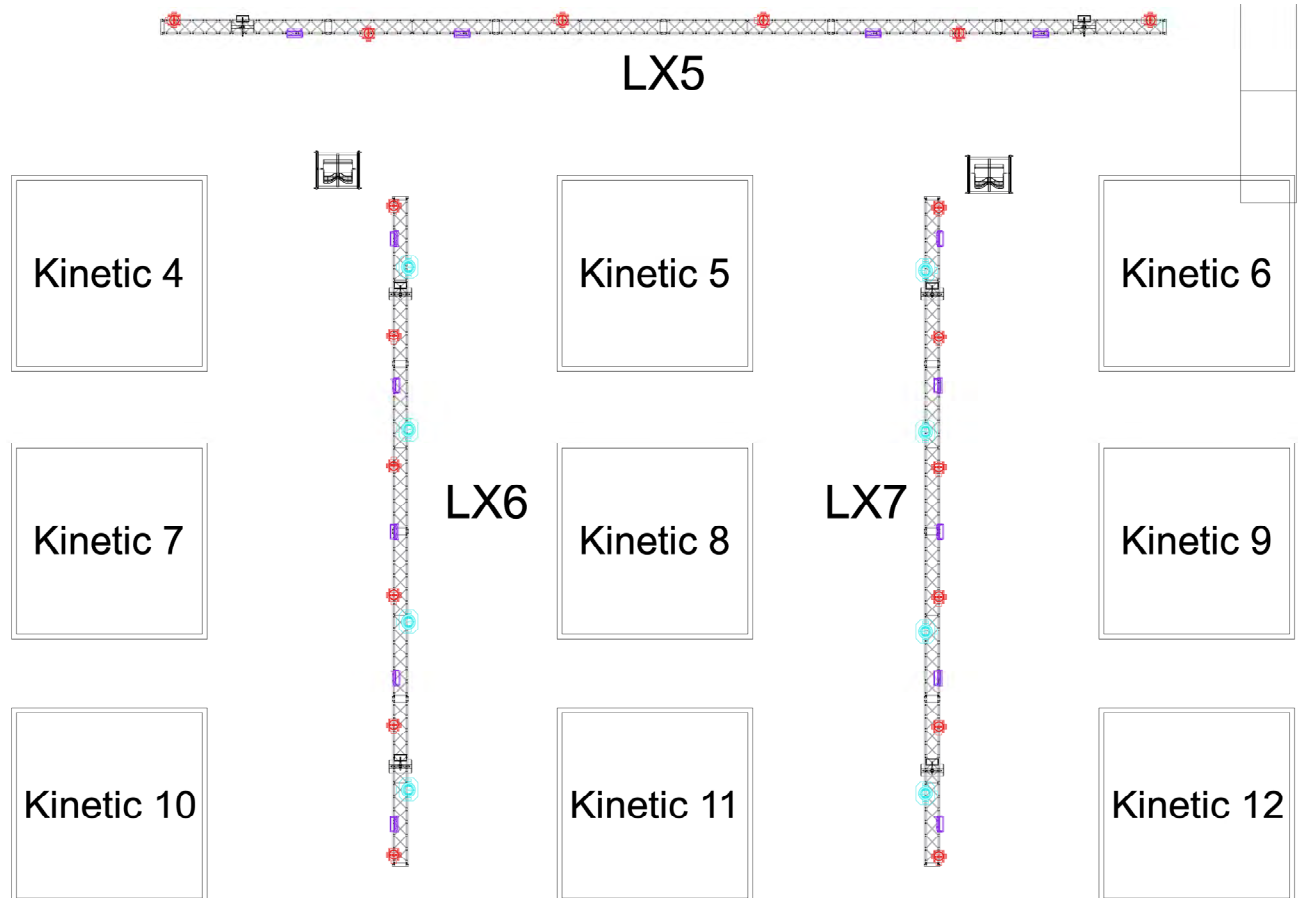
Laurent Rossion
+32 478 98 21 95

laurent@lse.eu
lse.eu

Schedule

Types Plan

 BT-Vertigo	●
 PR Lighting XR 1800-W Framing	●
 PR Lighting XR 380 BWS	●
 SGM P-2 15deg	●



eventlounge.be

info@eventlounge.be
+32 (0)2 726 55 26

Bd. Général Wahislaan
16F, 1030 Brussels

Technical Plan





Convention 1 & Cocktail Area - Side View



Laurent Rossion
+32 478 98 21 95

laurent@lse.eu
lse.eu

Schedule

Types	Qty	Modes
 BT-Vertigo	36	Standard
 XR 380B BWS	15	Standard
 XRLED 1600-W Framing	9	Standard
 BARCO-4K-15LUMENS	5	



eventlounge.be

info@eventlounge.be
+32 (0)2 726 55 26

Bd. Général Wahislaan
16F, 1030 Brussels

